

Save MONEY with ElectroLIFE

ElectroLIFE saves you money:

- REMOVES harmful scaling and rust in your existing HVAC cooling system using just our technology, water and electricity
- PREVENTS scaling and rust from occurring in new and old HVAC systems
- REDUCES your total electric consumption, EXTENDING the life of your HVAC system and OPTIMIZING your cooling efficiency
- ELIMINATES your dependency on expensive additives or chemicals

Ask us how!

ElectroLIFE

Our Mission Statement is simple: Provide a well-designed system and process that an end user can acquire, implement and monitor. ElectroLIFE is simple to operate, easy to maintain, cost effective and reliable. These attributes produce efficiency, energy cost savings and a consistent performance.

Vogel-Brown LLC

Richard Brown
Principal
Office: 703-444-7978
Cell: 703-915-4318
rbrown@vogelandbrown.com

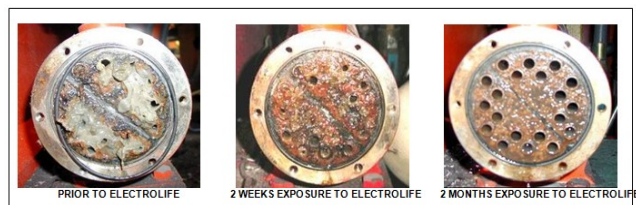


ElectroLIFE

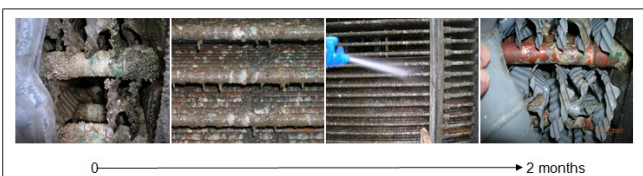
*The FIRST,
BEST, and ONLY
completely
GREEN solution
for CHEMICAL
FREE scale and
rust removal!*

Customer Illustrations

ElectroLife cleaned older HVAC systems in just 2 months:

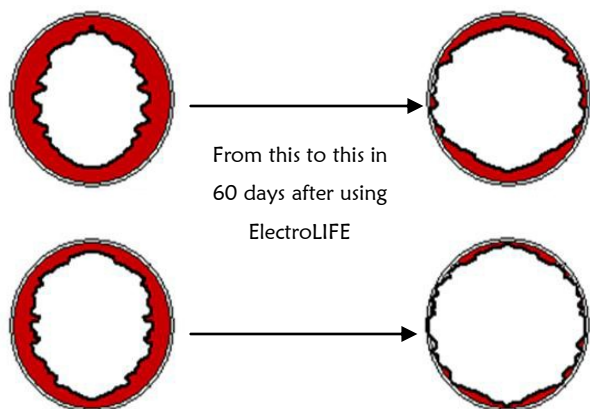


Below shows how scaling is eliminated due to properties of the circulatory water having taken on a higher level of ionic product and creating heightened dissociation:



10 Years of chemical usage

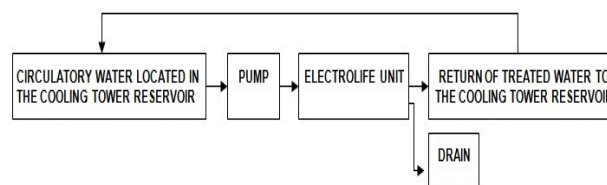
60 Days of ElectroLIFE



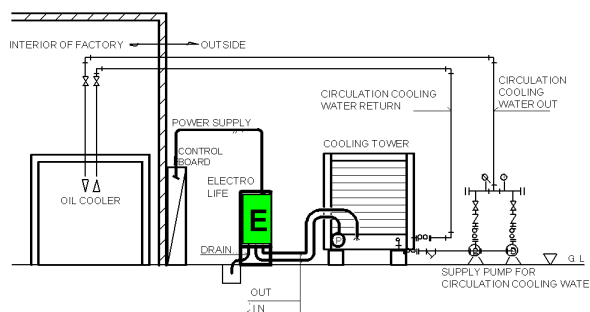
Process Elements

Five primary elements of the ElectroLIFE process:

1. Circulatory water of the HVAC tower passes through it's reservoir
2. System Pump transfers the circulatory water from the reservoir through the ElectroLIFE unit
3. ElectroLIFE unit electrolyzes and filters solids from water
4. Treated water returns to the reservoir
5. Waste solids are flushed from ElectroLIFE unit



Schematic



Specifications

DIMENSIONS: D=350mm (14"),
W=700mm (28"),
H=1170mm (47")

WEIGHT: 40 kg (88lbs)

WATER PRESSURE: Below 0.04 Mpa (0.4 Kg f/cm²)~ 0.2 Mpa (2.0 kgf/cm²)
The pressure resistance of the electrolysis vessel of 0.2 Mpa (2.0 kgf/cm²)

INPUT POWER SOURCE: Single phase AC
100V~240V, 50/60Hz

MAX. POWER CONSUMPTION: 800W (Main Frame Maximum of 600W)

WATER TREATMENT METHOD: Electrolysis. (Maximum of 10A, Preset Arbitrary Electrical Current) Once scaling is removed 10A is reduced to 5 A.

MAXIMUM FLOW: 25 liters (6.6 gallons) per minute

ELECTROLYSIS VESSEL SYSTEM: Continuous flow

LIFE OF ELECTRODE: Approximately 2 years

PIPE RADIUS: Water supply = 1/2" Hose Nipple,
Flush & Drainage = 3/4" Hose Nipple